

SEVAYATAN SIKSHAN MAHAVIDYALAYA

A Govt. Sponsored College
Established in 1959



(Affiliated to VU & WBUTTEPA and Recognized by the NCTE: Letter No. ERC/7-87.6(1). 3/2008/11885)
Revised Letter No. - ERC/NCTE/(APE00720)/B.Ed.(Revised Order)/2015/32494, Dtd. 30-05-2015.

P.O.: Sevayatan, Dist. - Jhargram, PIN 721514:: **WBUTTEPA Code No. 16024**

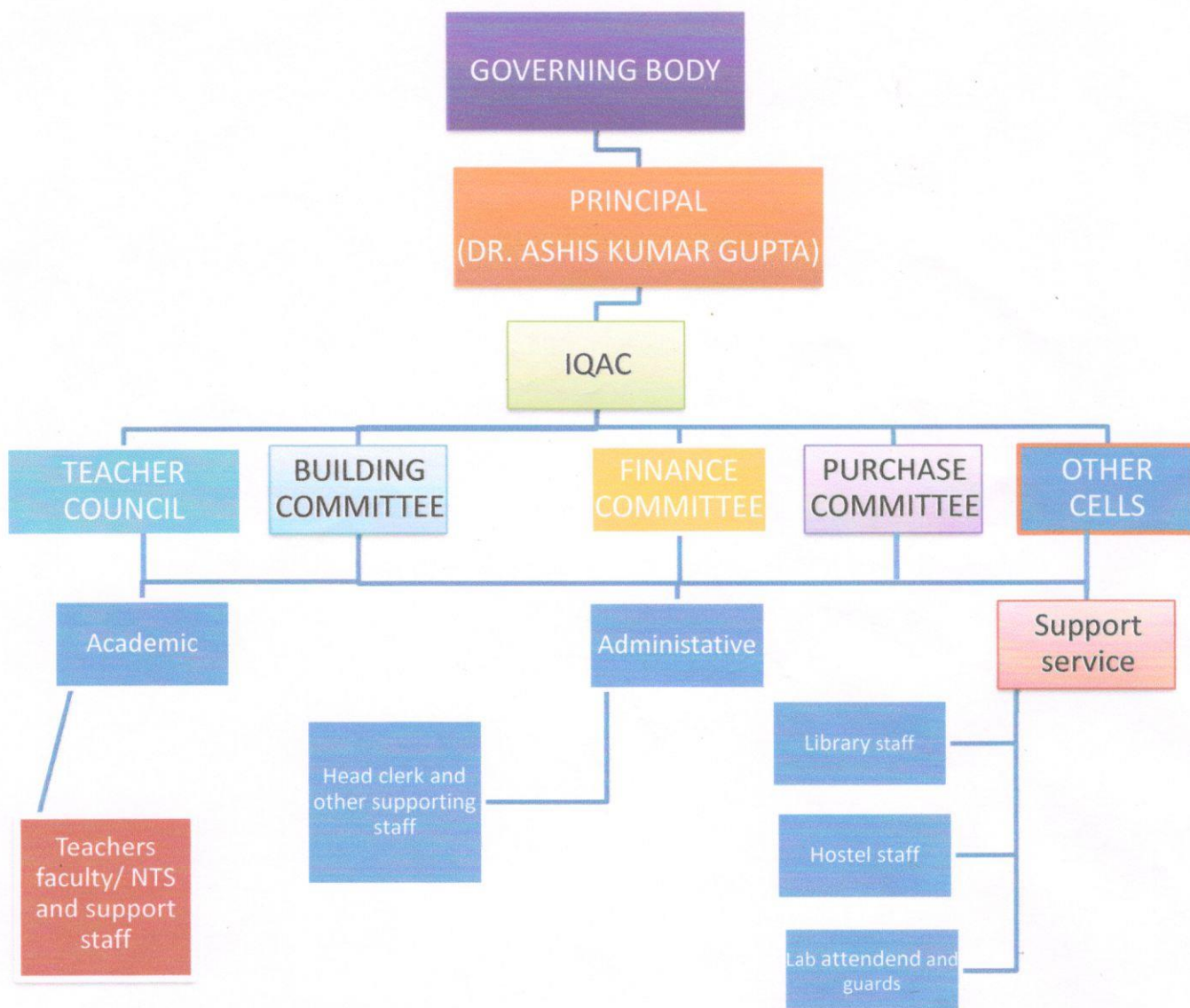
E-mail: ssmahavidyalaya@yahoo.co.in Web: www.ssmahavidyalaya.ac.in

Ref. No. :-----

Date:-----

6.2.2 ORGANOGRAM

COLLEGE ADMINISTRATION



[Signature]
Co-ordinator

Internal Quality Assurance Cell (IQAC)

[Signature]

Principal
Sevayatan Sikshan Mahavidyalaya
(A. Govt. Sponsored College)

SEVAYATAN SIKSHAN MAHAVIDYALAYA

A Govt. Sponsored College
Established in 1959



(Affiliated to VU & WBUTTEPA and Recognized by the NCTE: Letter No. ERC/7-87.6(1). 3/2008/11885)
Revised Letter No. - ERC/NCTE/(APE00720)/B.Ed.(Revised Order)/2015/32494, Dtd. 30-05-2015.

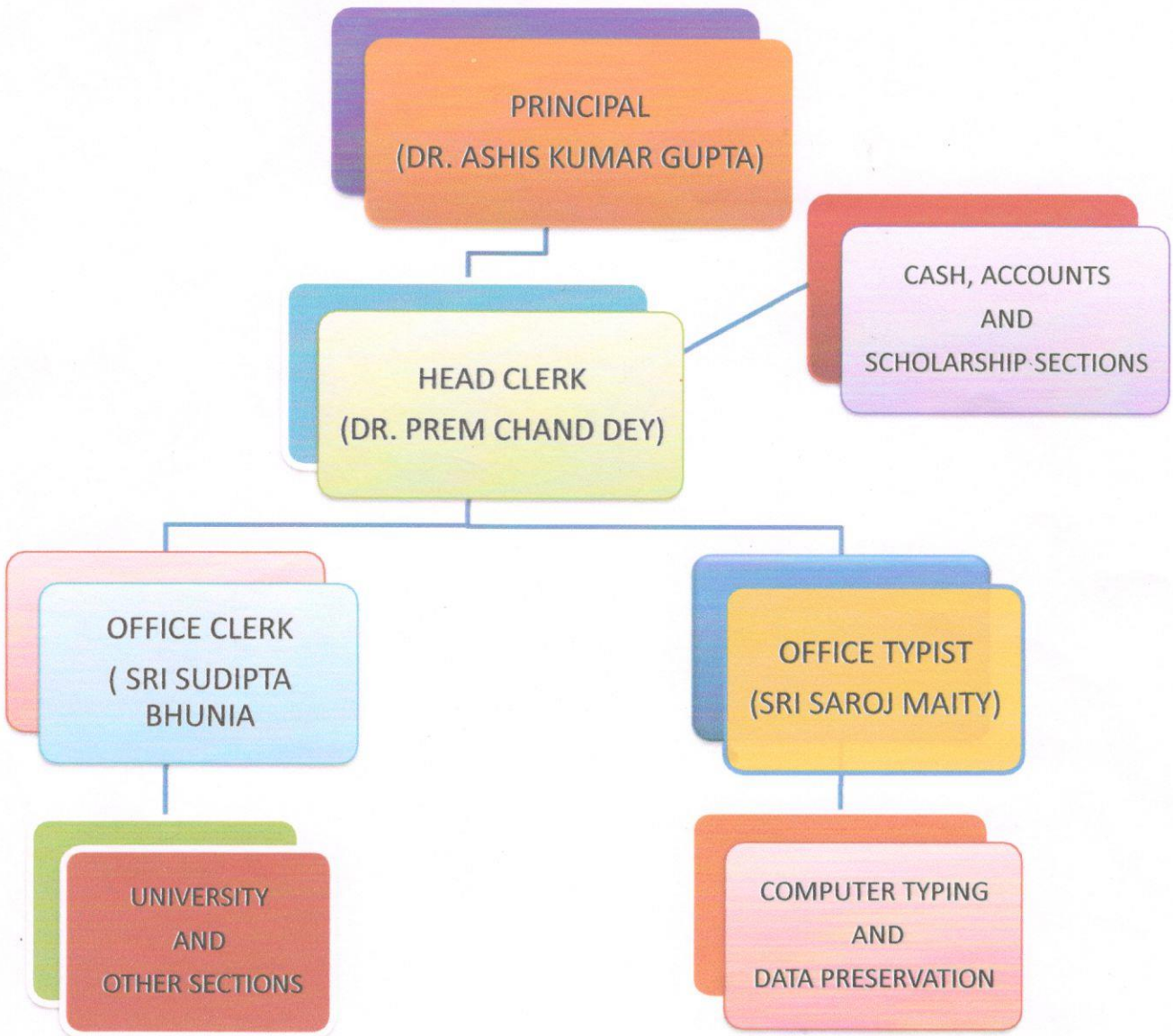
P.O.: Sevayatan, Dist. - Jhargram, PIN 721514:: **WBUTTEPA Code No. 16024**

E-mail: ssmahavidyalaya@yahoo.co.in Web: www.ssmahavidyalaya.ac.in

Ref. No. :-----

Date:-----

ADMINISTRATIVE SECTION



Co-ordinator

Internal Quality Assurance Cell (IQAC)

Principal
Sevayatan Sikshan Mahavidyalaya
(A.Govt.Sponsored College)
721514